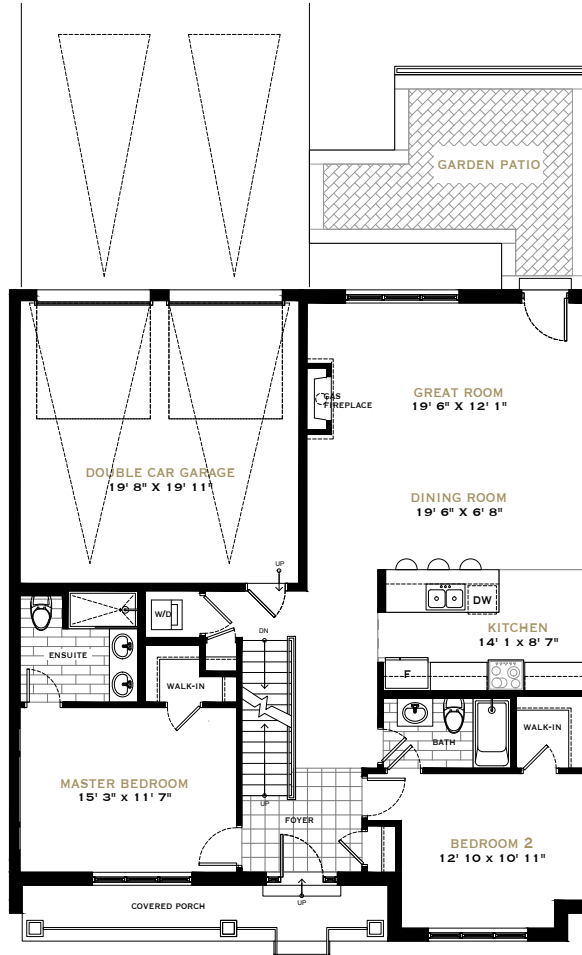


The Nipissing II

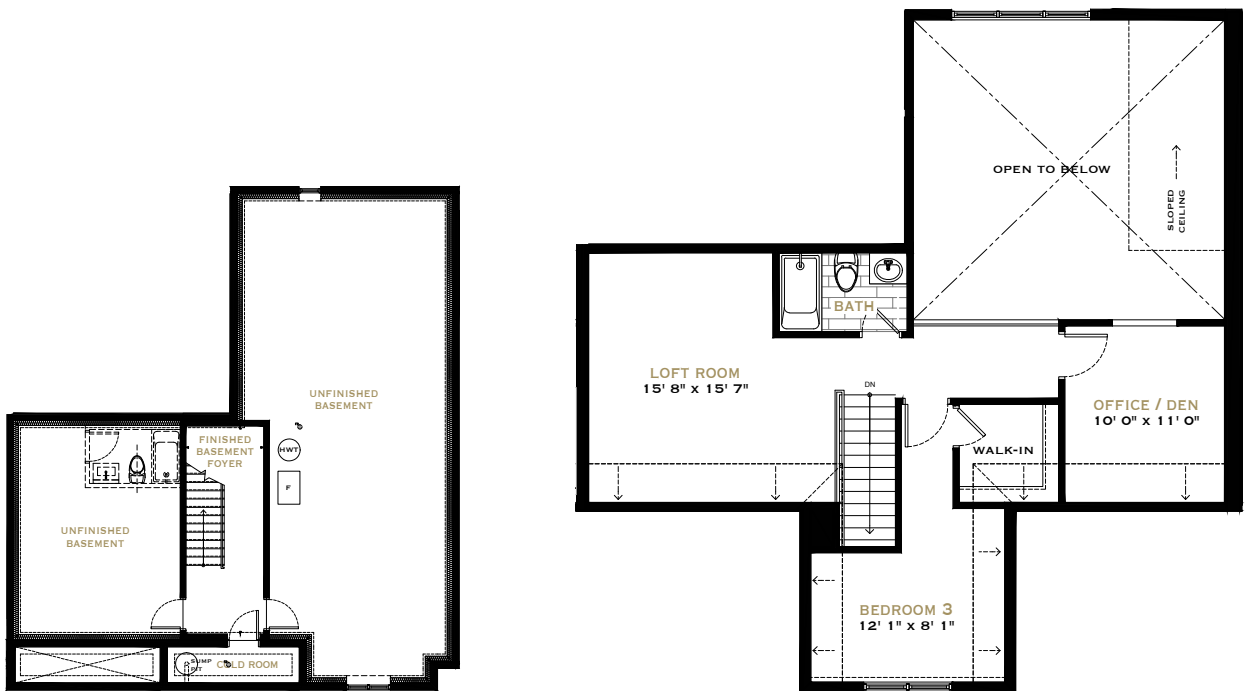
2,235 SQ.FT.*

3 Bedrooms, 3 Bathrooms, 4 car parking

*includes 154 sq.ft. finished basement



GROUND FLOOR



BASEMENT

SECOND FLOOR LOFT

FRAM + Slokker

All dimensions, areas and drawings are approximate. All prices, sizes and specifications are subject to change without notice. All renderings are artist's concept. Actual usable floor space may vary from the stated floor area. E.&O.E.